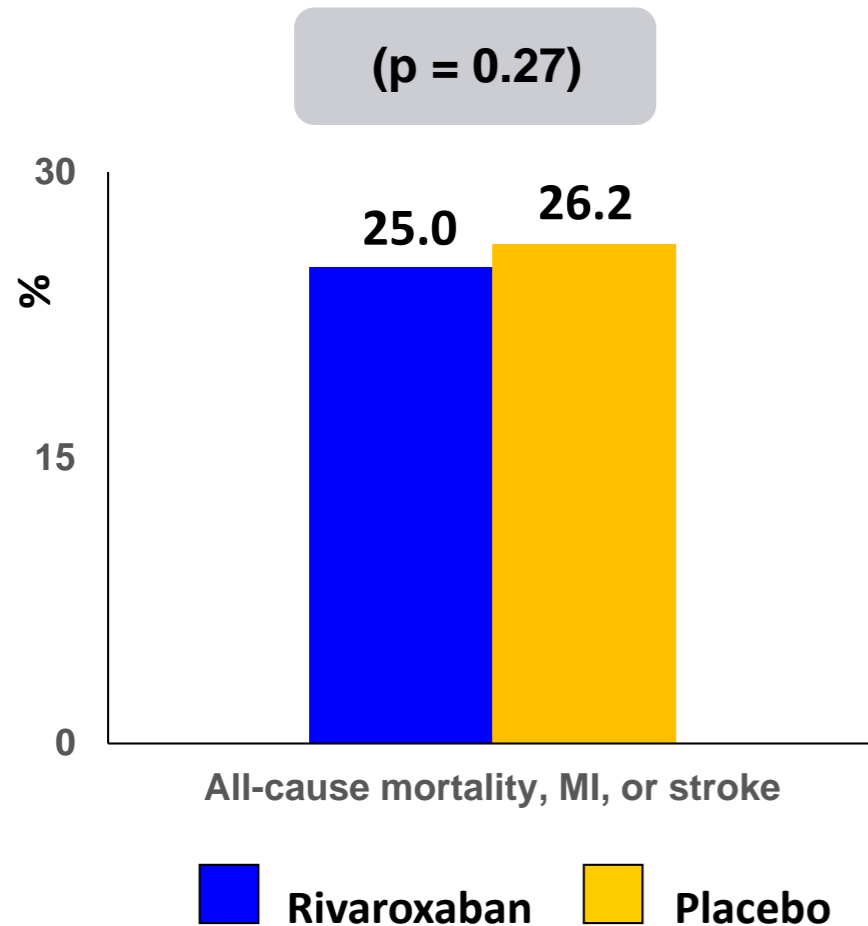


Trial design: Patients with chronic heart failure, sinus rhythm, and coronary disease were randomized to rivaroxaban 2.5 mg twice daily (n = 2,507) vs. placebo (n = 2,515).



RESULTS

- All-cause mortality, MI, or stroke: 25.0% of the rivaroxaban group vs. 26.2% of the placebo group (p = 0.27)
- Fatal bleeding or bleeding into a critical space with potential to cause disability: 0.7% of the rivaroxaban group vs. 0.9% of the placebo group (p = 0.48)

CONCLUSIONS

- Among patients with chronic heart failure, sinus rhythm, and coronary disease, rivaroxaban was not beneficial
- Rivaroxaban did not reduce major adverse events compared with placebo; major bleeding was similar between treatment groups