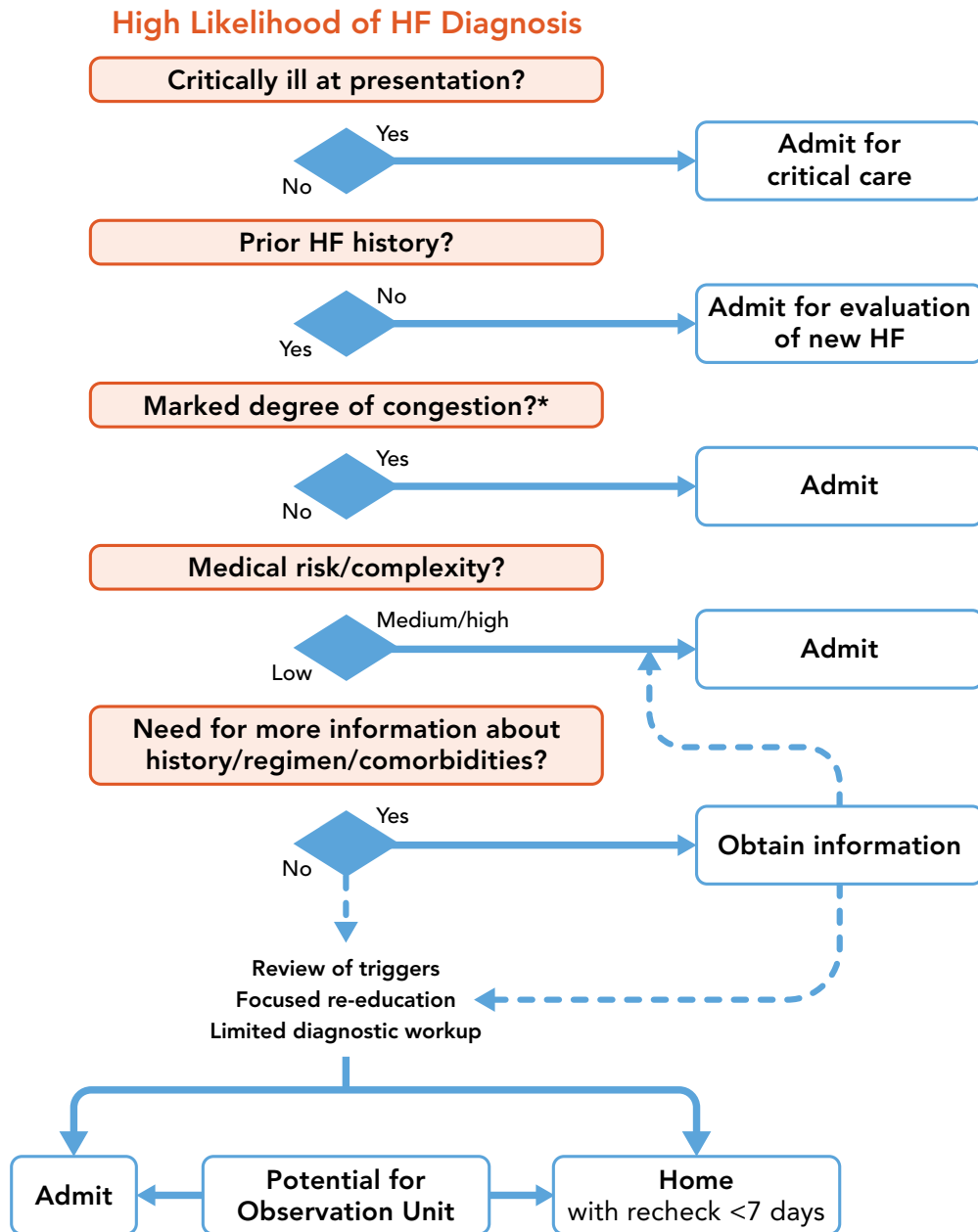


Figure 2

Use this triage algorithm about admission and initial therapy to guide thought processes during admission evaluations rather than as a formal description of admission criteria and administrative processes surrounding admission.



* Marked leg edema, ascites, or scrotal or perineal edema may be clinical signs of marked congestion. The degree of radiographic and biochemical abnormalities may also indicate the degree of congestion.

ED = emergency department; HF = heart failure