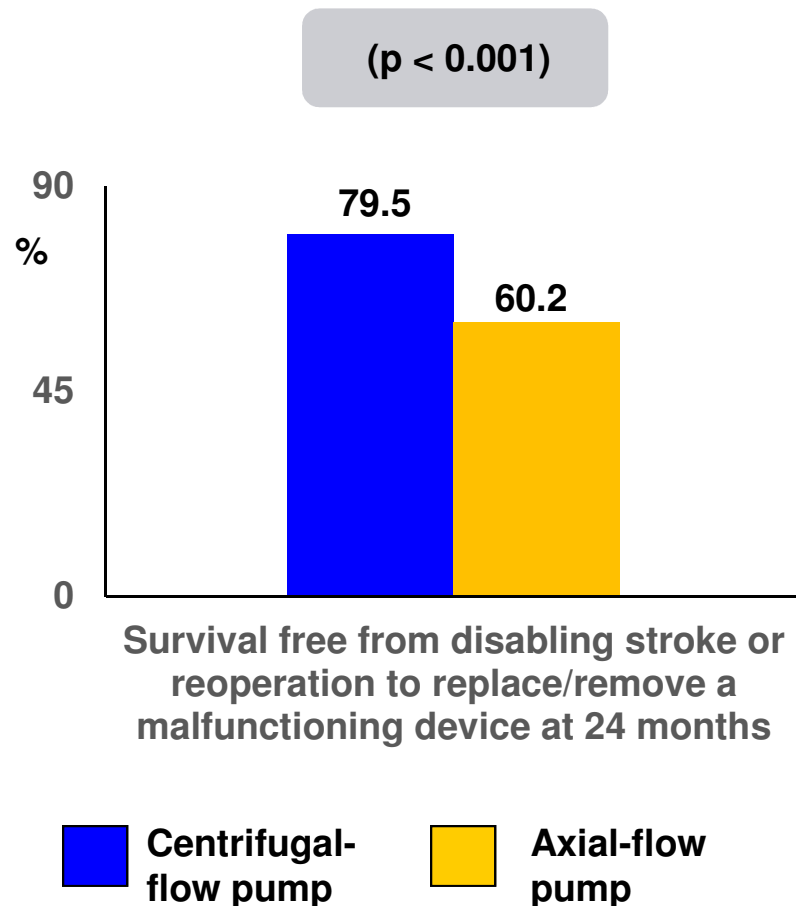


MOMENTUM 3 – Long-Term Outcomes

Trial design: Patients with advanced heart failure were randomized to a centrifugal-flow pump (n = 190) vs. an axial-flow pump (n = 176).



Results

- Survival free from disabling stroke or reoperation to replace/remove a malfunctioning device at 24 months: 79.5% of the centrifugal-flow pump group vs. 60.2% of the axial-flow pump group (p < 0.001 for noninferiority; p < 0.001 for superiority)
- Freedom from disabling stroke at 24 months: 92.5% in the centrifugal-flow pump group vs. 92.8% in the axial-flow pump group (p = 0.6)

Conclusions

- Among patients with advanced heart failure, use of the HeartMate 3 centrifugal-flow pump was superior to the Heartmate II axial-flow pump at preventing disabling stroke or reoperation to replace/remove a malfunctioning device